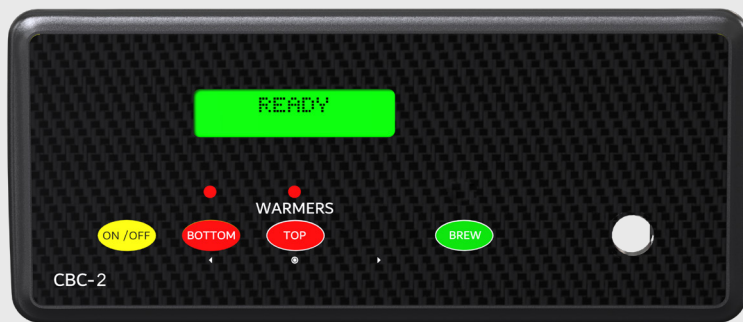


CBC-02



COFFEE BREW CONTROLLER APPLICATION NOTE

With modularity in mind, Renau controllers are not limited to any particular application. With our single wire design, modules can be incorporated for added functionalities with minimal electrical power complications.

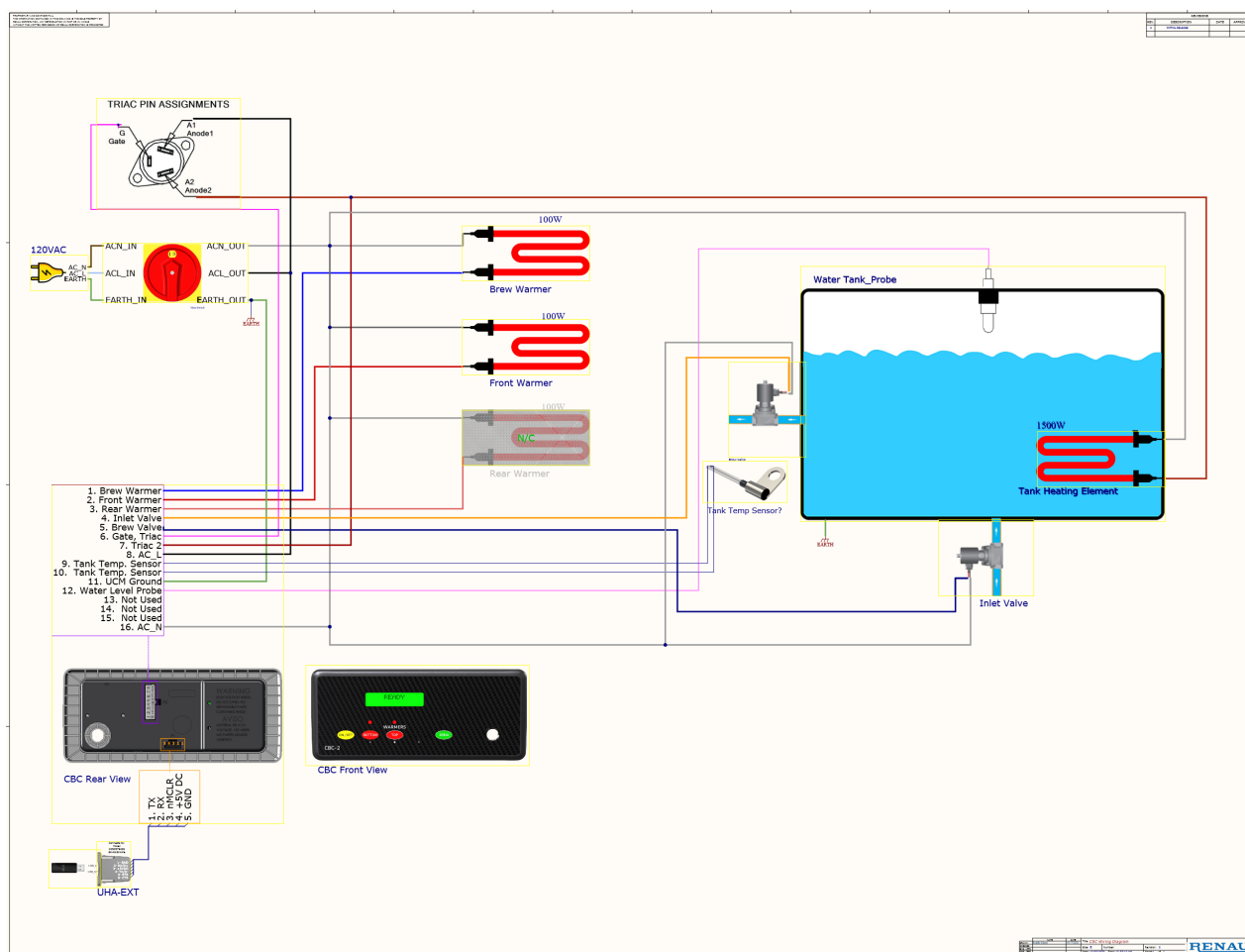
Our products are all designed to interface with each other and be easily interchangeable. As a result, this system can easily be adapted to suit many other brewer equipment designs for commercial kitchen applications.

The CBC-02 is designed for double brewer applications, and can be expanded into triple or more brewers.

Features:

- 16 X 2 LCD Display
- Color(Red/Green) LED indicators for warmer & brew buttons
- 120VAC & 220VAC, 50/60HZ OPERATION
- HEAT SENSOR: THERMISTOR 80-100K OHMS AT 25 C
- 16 PIN MOLEX MODULAR LINK CONNECTOR
- REMOTE TRIAC: 40 AMPS, 400V HEATSINK REQUIRED
- Operating Temperature: 0-75°C (32-167°F)

Dimensions: • 8.55" W x 3.60" H x 1.55" D



We do more than design. We invent.