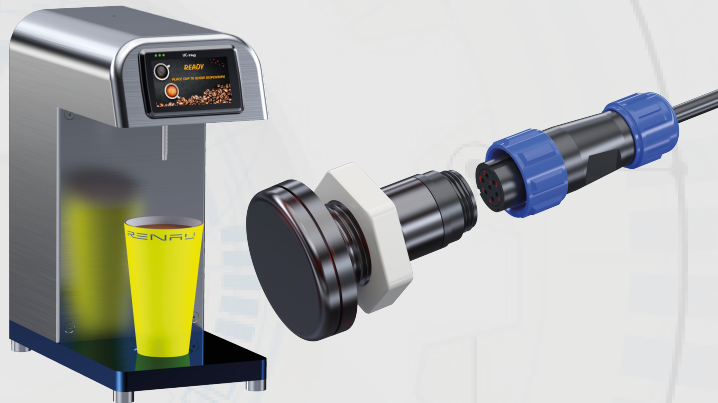


APPLICATION NOTE

RS-700 RADAR SENSOR



DISPENSING APPLICATION RADAR SENSOR

RENAU's RS-700 radar sensor uses short-range radar operating in the 60GHz ISM band to detect the presence of a beverage container and dispense a precise amount of product quickly and completely touch-free.

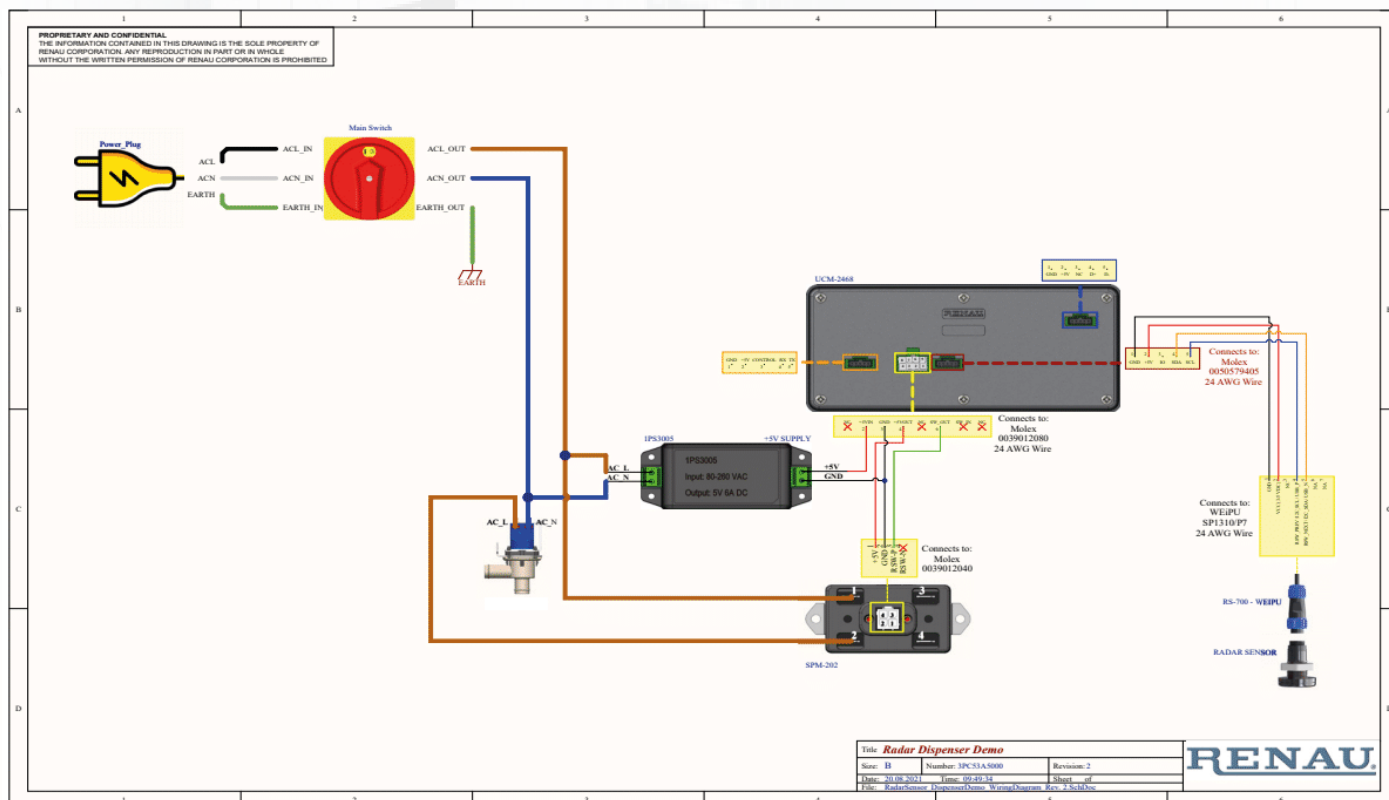
A basic system configuration includes any RENAU UCM-2000 series touchscreen controller to provide status information and processing power, our powerful and compact SPM-202 solid state power module to open and close valves as needed, the RS-700 radar sensor module for sensing, and universal switching power supply for clean, reliable power anywhere in the world.

With our unique programming, a suitably equipped beverage dispenser will automatically detect the presence and size of a cup and

accurately pour the exact amount of product needed so no user input is needed to select a cup size or to start/stop dispensing. RENAU's control systems can even prevent dispensing if an unauthorized container is detected—preventing guests from dispensing coffee, tea, or soda into water cups or personal containers, preventing shrink and maximizing operator profits.

The same logic that prevents the beverage dispenser from pouring into an unauthorized container also prevents unwanted pours, so a guest gesturing or a team member cleaning within the sensor area will not result in inadvertent messes or injuries.

The RS-700 is simply the best option for safe, easy, and accurate touch-free dispensing available today.



We do more than design. We invent.

RENAU

9309 Deering Ave. Chatsworth, CA 91311

Tel: 818.341.1994
Fax: (818) 341-8063
info@renau.com
www.renau.com

Specifications are subject to change without notice. The products manufactured by RENAU are protected under one or more of the following U.S. Patents: 6,850,850 6,816,670 6,636,772 6,546,944 6,214,239 5,835,993 4,943,706 4,849,098 and other patents pending.
Designed and manufactured in the U.S.A.