

Holding Cabinet



UCM-2443 HOLDING CABINET APPLICATION NOTE

In this application note we will demonstrate an example of a complete control solution for a holding cabinet design using Renau modules.

This particular system utilizes several modules including an HMC-50, SPM-708, UHA-Extender, and a UCM-2443. Included is an option to add either 3 SPS-204's, or 6 SPS-101's.

UCM-2443: The flush mount 4.3" touchscreen control, display, and timer which provides a visual representation of each zone along with their hold times, temperature, and recipe name. Also displays alerts, errors, and any user programmed reminders.

HMC-50: Provides temperature measurements for the unit as well as an audible buzzer for alerts.

SPM-708: Provides switching for heating elements.

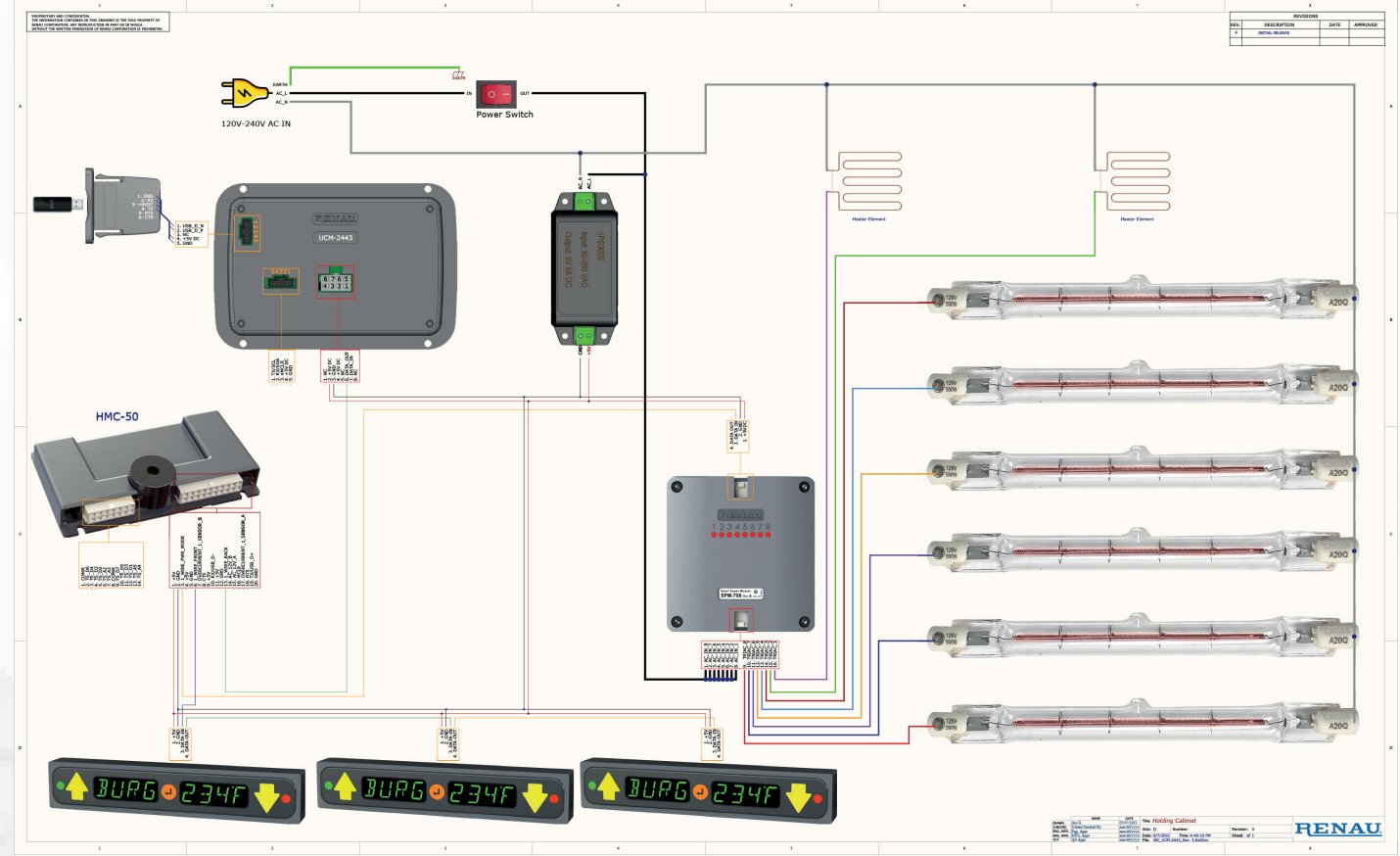
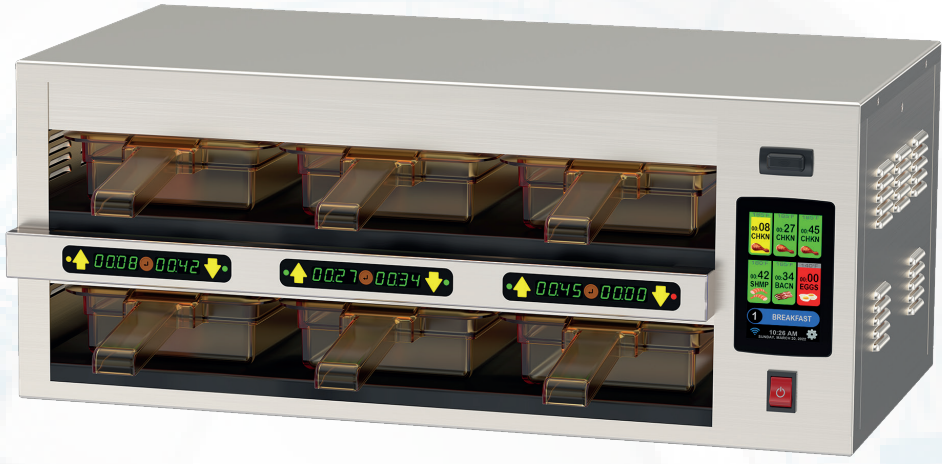
UHA-Extender: Used for firmware and recipe changes via either flash drive, or wirelessly with a Wi-Fi dongle. Use of a Wi-Fi dongle also allows the user to remotely control the unit, receive alarms via email or text, and receive digital HACCP reporting and data collection.

SPS-204 (Optional): Provides operators with additional display capabilities as well as a second method to activate timers, and switch recipes.

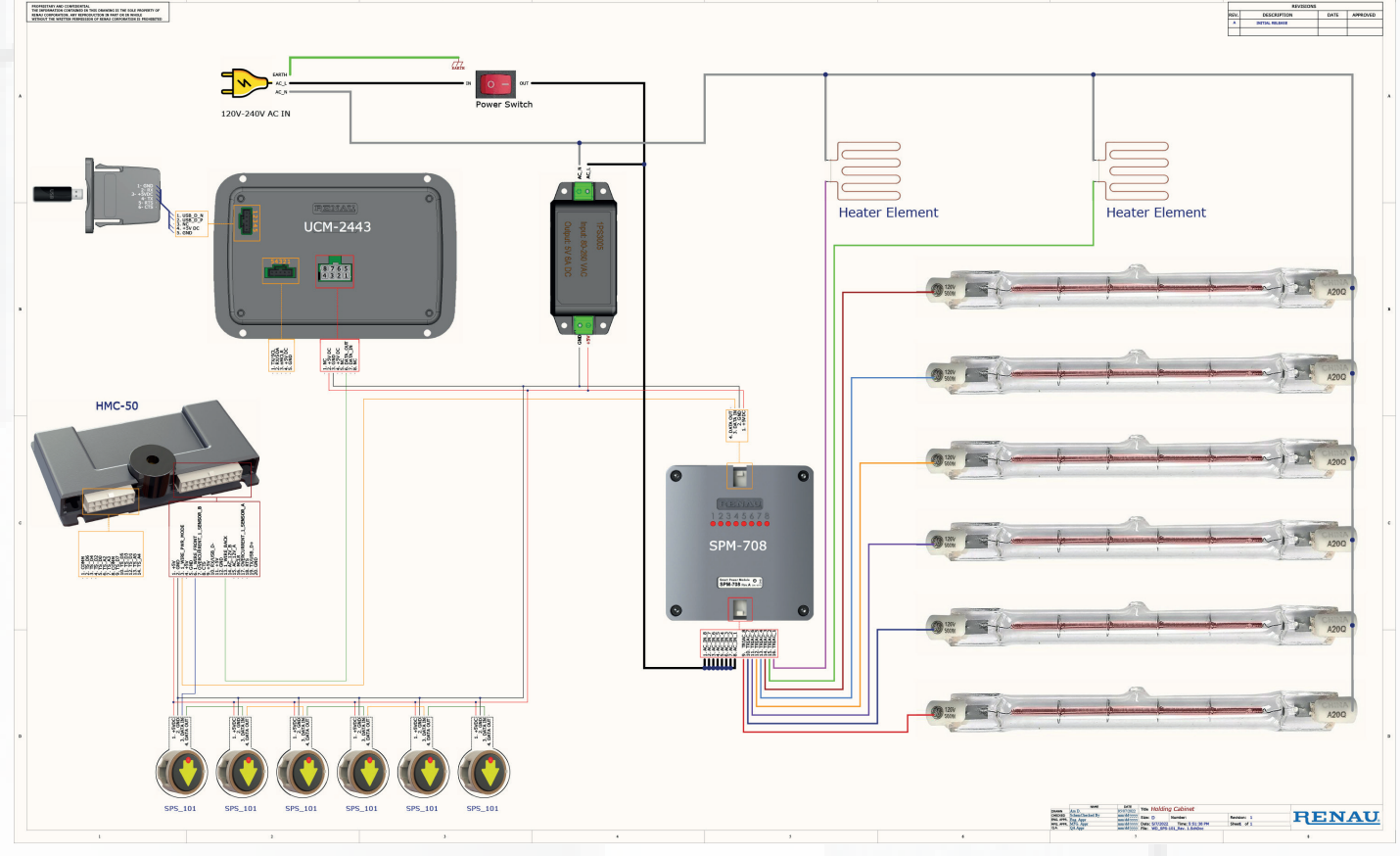
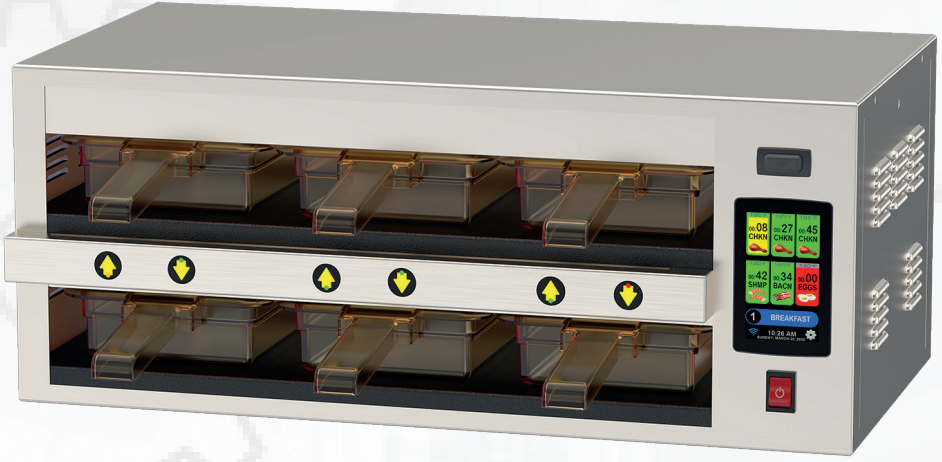
SPS-101 (Optional): Provides operators a second method of activating timers and switching day parts.

With modularity in mind, Renau modules are not limited to any particular application. Our products are all designed to interface with each other and be easily interchangeable. As a result, this system can easily be adapted to suit many other equipment designs or commercial kitchen applications.

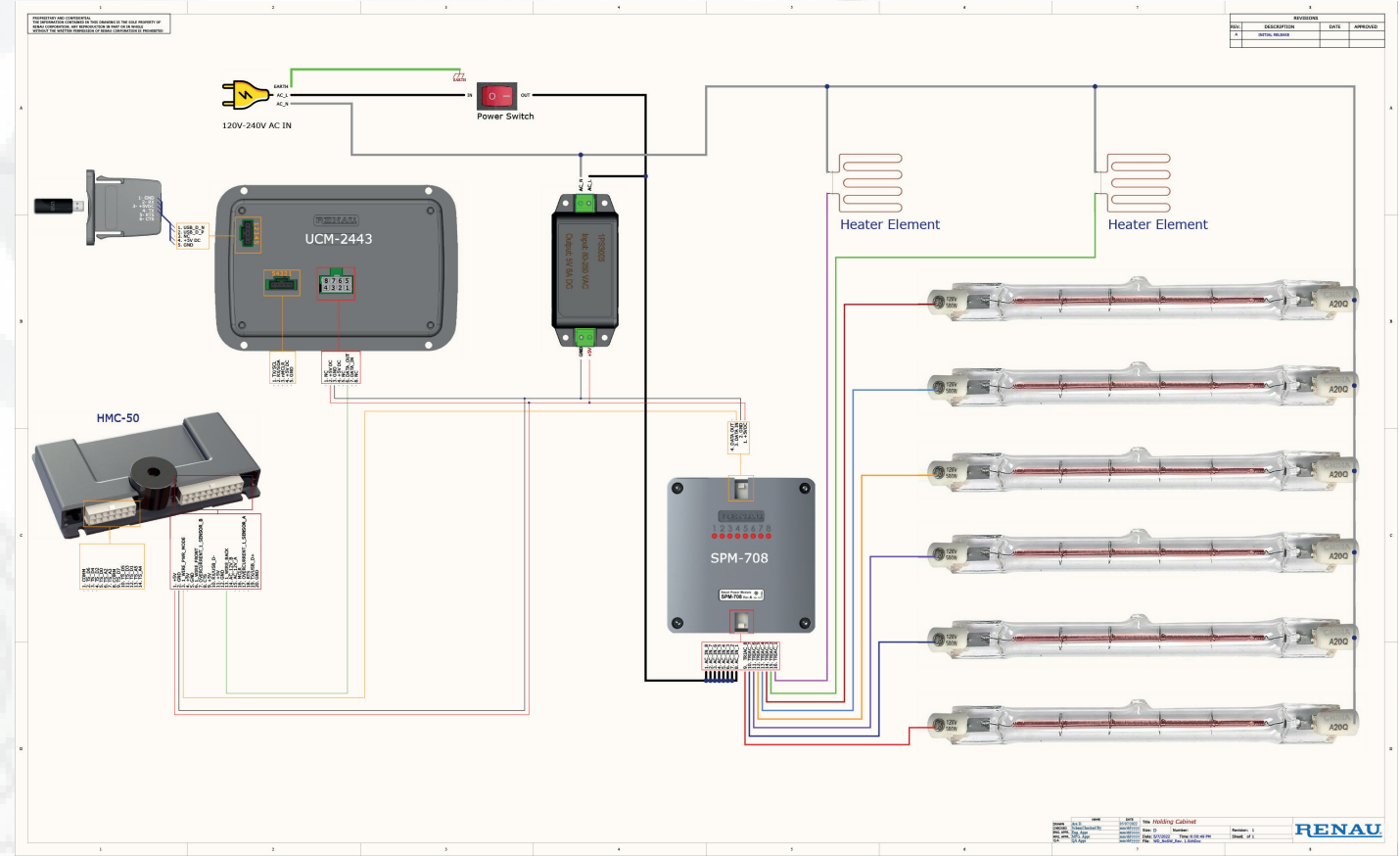
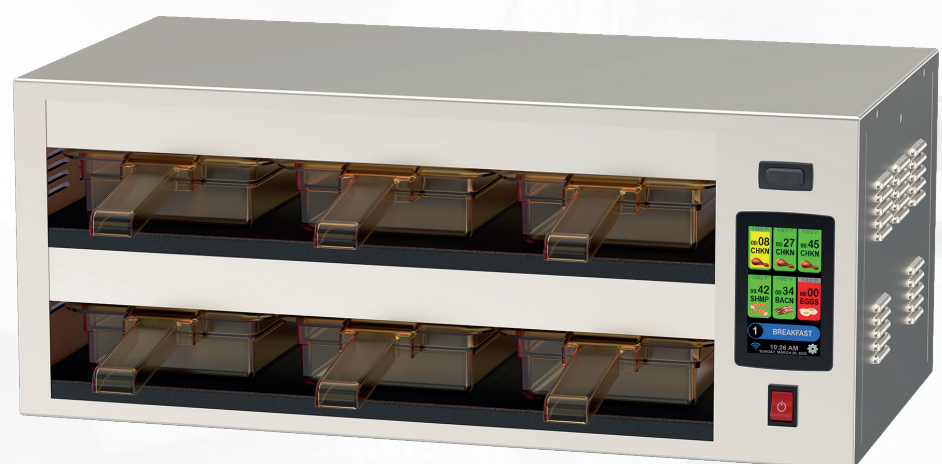
FULLY LOADED



SIMPLIFIED



BASIC



We do more than design. We invent.